

# ABT #2



**Oil Pattern Distance:** 40 Feet      **Reverse Brush Drop:** 40 Feet      **Oil Per Board:** 50 uL  
**Forward Oil Total:** 12.45 mL      **Reverse Oil Total:** 11.5 mL      **Volume Oil Total:** 23.95 mL  
**Forward Boards Crossed:** 249 Boards      **Reverse Boards Crossed:** 230 Boards      **Total Boards Crossed:** 479 Boards

	Start	Stop	Loads	Speed	Crossed	Start	End	Feet	T.Oil
1	2L	2R	2	18	74	0.0	2.5	2.5	3700
2	9L	9R	1	18	23	2.5	5.0	2.5	1150
3	10L	10R	2	18	42	5.0	10.1	5.1	2100
4	11L	11R	4	22	76	10.1	22.5	12.4	3800
5	12L	12R	2	22	34	22.5	28.7	6.2	1700
6	2L	2R	0	26	0	28.7	40.0	11.3	0

Conditioner:  
 Type In or Select One  
  
 TransferType:  
 Type In or Select One

Forward



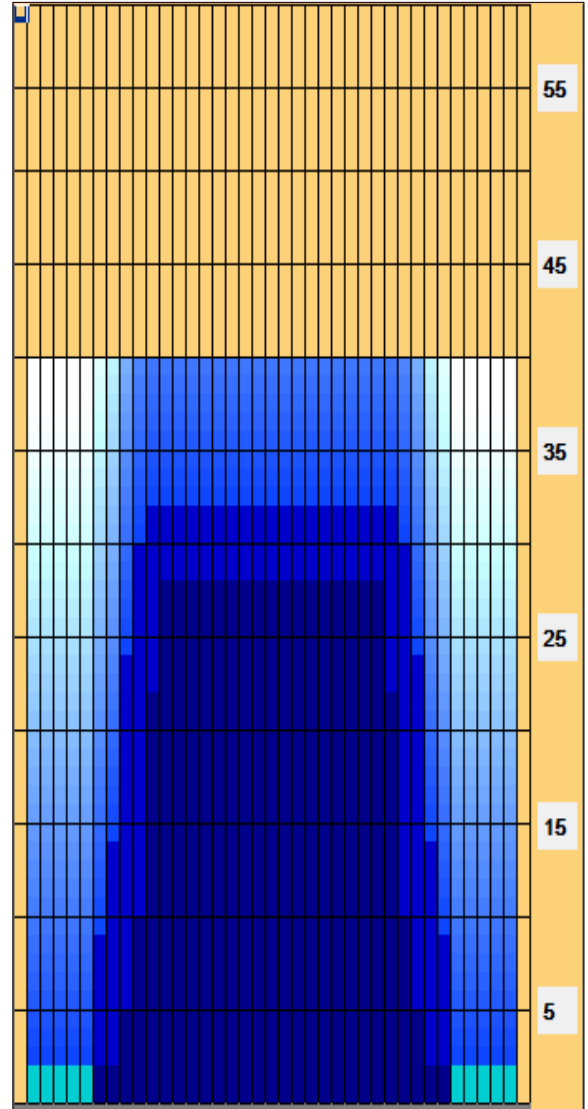
Reverse



Combined



Buff



Navigation: Forward Reverse More

	Start	Stop	Loads	Speed	Crossed	Start	End	Feet	T.Oil
1	2L	2R	0	30	0	40.0	32.0	-8.0	0
2	11L	11R	1	18	19	32.0	29.5	-2.5	950
3	10L	10R	2	18	42	29.5	24.4	-5.1	2100
4	9L	9R	4	18	92	24.4	14.2	-10.2	4600
5	8L	8R	2	18	50	14.2	9.1	-5.1	2500
6	7L	7R	1	14	27	9.1	7.2	-1.9	1350
7	2L	2R	0	10	0	7.2	0.0	-7.2	0

Navigation: Forward Reverse More

Item	3L-7L:18L-18R	8L-12L:18L-18R	13L-17L:18L-18R	18L-18R:17R-13R	18L-18R:12R-8R	18L-18R:7R-3R
Description	Outside Track:Middle	Middle Track:Middle	Inside Track:Middle	Middle:Inside Track	Middle:Middle Track	Middle:Outside Track
Track Zone Ratio	9.55	1.52	1	1	1.52	9.55

